



2014 *Collection*

Floor coverings

Wall coverings

Underlayment

Technical products



www.corkart.pt

WELCOME



A wonderfull experience

CORKART is a private, family owned company founded by José Correia Neves in 1997, although he has been involved in the business for more than 25 years. All operations are headquartered in Vendas Novas, Portugal, a town located in the heart of the Portuguese cork oak forests, approx 1 hour south of Lisbon. With a covered area of 18.000 square meters, CORKART employs more than 100 people. State-of-the-art manufacturing equipment, excellent design and highly trained, skilled and experienced workers are just a few of the benefits of dealing with CORKART. CORKART uses excellent raw materials in order to achieve superb results and high quality products.



Floor Coverings

Discover our wide range of premium quality floors, from the more traditional to the most contemporary look, in many different types of applications.

page 9



Underlayment

For a superior comfort and eco-friendly responsibility, use one of our solutions of cork underlayment for many types of flooring

page 86

Wall Coverings

Here you can find our solutions for wall coverings. From a wide range of colors and textures, you will surely find the best solution for all tastes and styles.

page 76



Technical Products

All the premium quality floors need to be taken care properly. Explore our solutions for the daily maintenance and for the repair of damaged floors.

page 90





Floor coverings

10



- 12 [Our Natural Shield Finishing](#)
- 13 [Our Bevels](#)
- 14 [Our Systems](#)
- 16 Design Collection
- 18 Lite Plank Collection
- 20 Exclusive Collection
- 22 Narrow Plank Collection
- 24 Slate Collection
- 26 Long Plank Collection

28



- 30 [Our Emboss Structures](#)
- 31 [Our Bevels](#)
- 32 [Our Systems](#)
- 36 Home Collection
- 37 Wide Plank Collection
- 38 Grange Collection
- 40 Oak Collection
- 44 Originals Collection
- 52 Metallic Collection
- 54 Stone Collection
- 56 XL Slate Collection
- 60 Royal Senses Collection
- 62 Rustic Senses Collection
- 64 Lungo Collection

70



- 72 [Our Systems](#)
- 72 Murano Collection
- 74 Stripes Collection

94

[Technical Information](#)



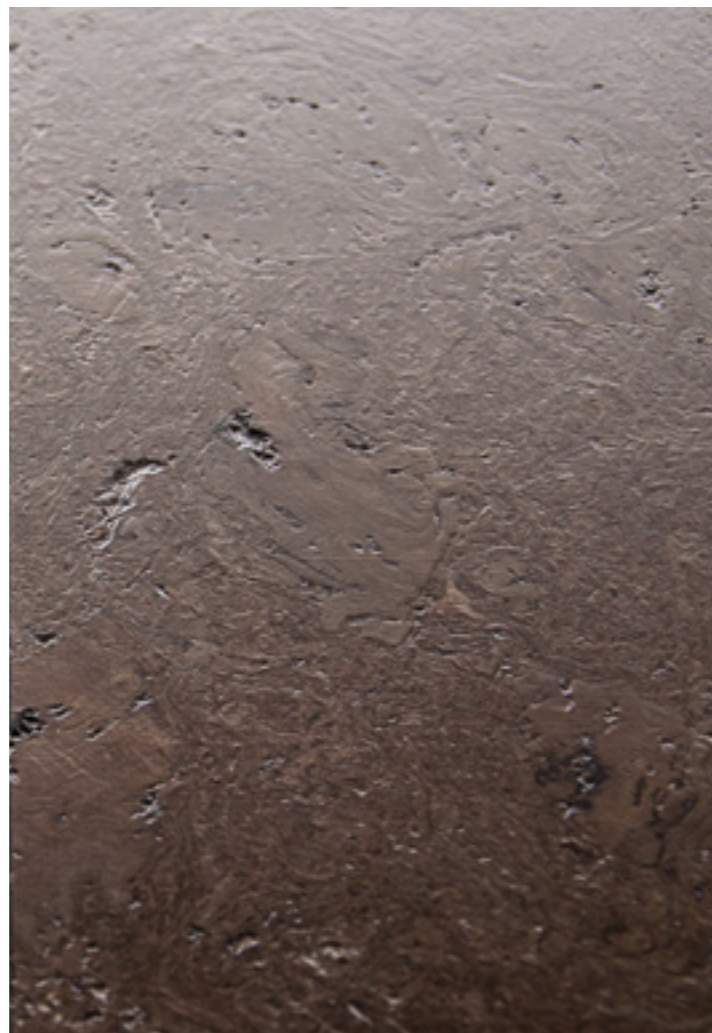
Cork

is *natural, recyclable* and *biodegradable*. No natural or man-made material replicates its properties. It is remarkably *resistant* to wear, as it is *less* affected by impact and friction than other hard surfaces, due to its *cellular* composition.

OUR NATURAL SHIELD[®] FINISHING



Wax



Varnish

OUR BEVELS

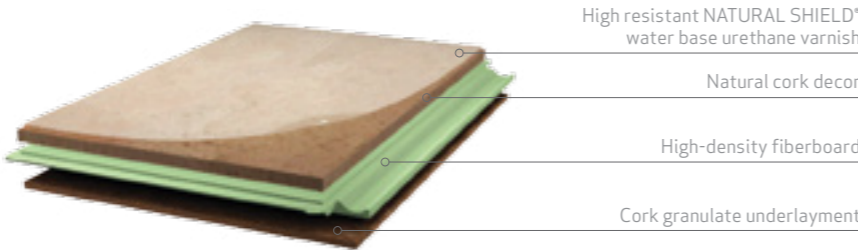


X - 4 Sides Floating bevel | **X2** - Longside Floating bevel



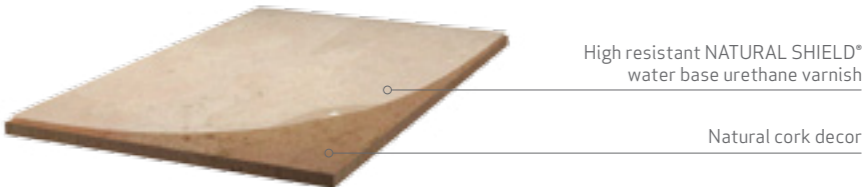
CH - Gluedown Tiles bevel

FLOATING FLOOR



COLLECTIONS	Dimensions (mm)	Bevel Available	Impact Sound Reduction	Finishing	Class
LITE	900 x 300 x 10	No	16 dB	Natural Shield Wax or Varnish	23/31
DESIGN	900 x 300 x 10	No	16 dB	Natural Shield Wax or Varnish	23/31
EXCLUSIVE	900 x 300 x 11	No	19 dB	Natural Shield Wax or Varnish	23/31
NARROW PLANK	900 x 190 x 11	Yes - x / x2	19 dB	Natural Shield Wax or Varnish	23/31
SLATE	612 x 440 x 11	Yes - x	19 dB	Natural Shield Wax or Varnish	23/31
LONG PLANK	1200 x 210 x 11	Yes - x2	19 dB	Natural Shield Wax or Varnish	23/31

GLUE DOWN



COLLECTIONS	Dimensions (mm)	Bevel Available	Impact Sound Reduction	Finishing	Step Sound	Color available
6 MM ALL DESIGNS	600 x 300 x 6mm 1212 x 222 x 6mm 600 x 450 x 6mm	Yes - CH	16 dB	Unfinished or Natural Shield	65 dB	All colors
4 MM ALL DESIGNS	600 x 300 x 4mm 1212 x 222 x 4mm 600 x 450 x 4mm	Yes - CH	12 dB	Unfinished or Natural Shield	65 dB	All colors

Design

Collection



Design Collection | 386 GL

385 PT <div>F GD</div>	385 SLV <div>F GD</div>	386 ML <div>F GD</div>
386 SLC <div>F GD</div>	386 GL <div>F GD</div>	386 CZ <div>F GD</div>



209 N



209 C



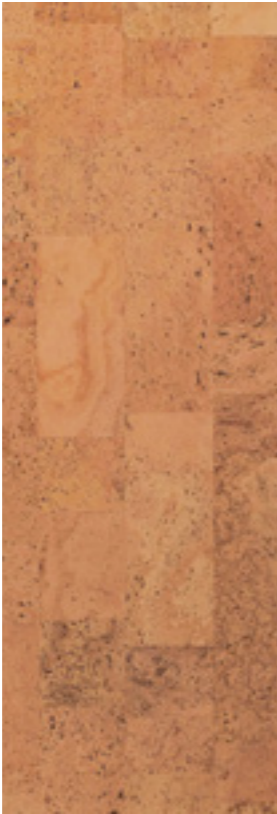
319 N



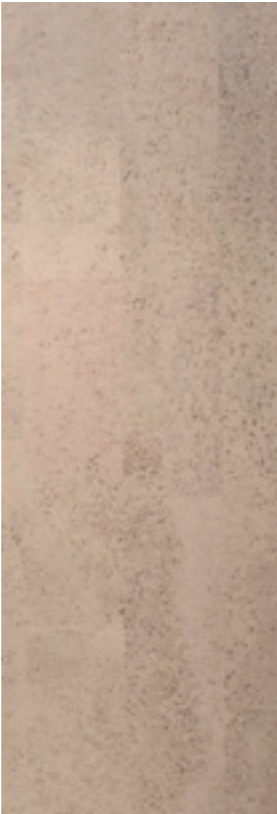
319 C



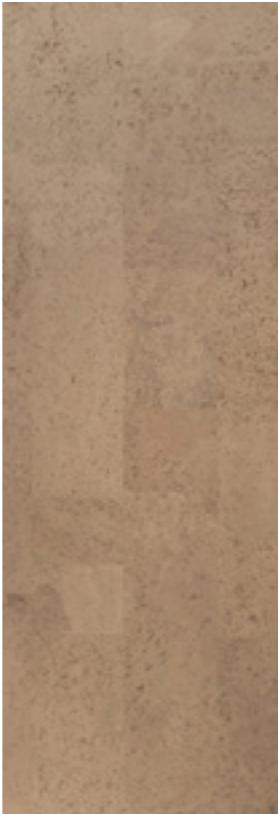
378 N



384 N



384 C



384 ST



FLOOR *COVERINGS* | Cork Concept

Lite *Collection*



Lite Collection | 384 N



Exclusive Collection | 101 N

Exclusive *Collection*



101 N



103 C



156 N



159 N



317 N



317 C



323 N



333 N

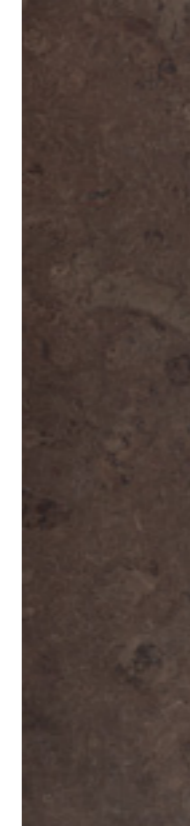




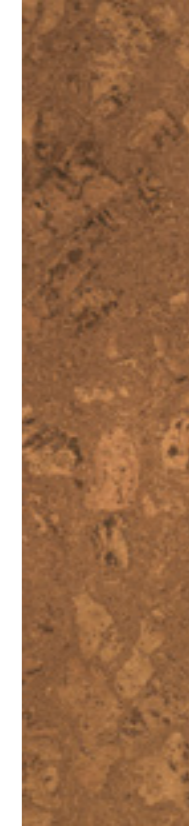
Narrow Plank Collection | 378 AZ x2



FLOOR *COVERINGS* | Cork Concept



323 PT



323 ML



378 AZ



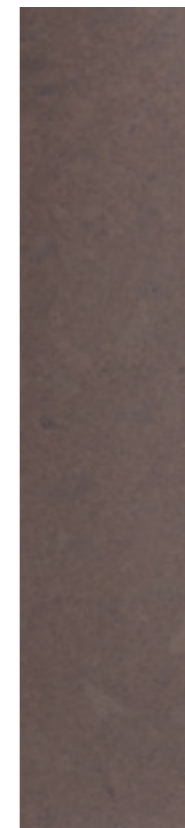
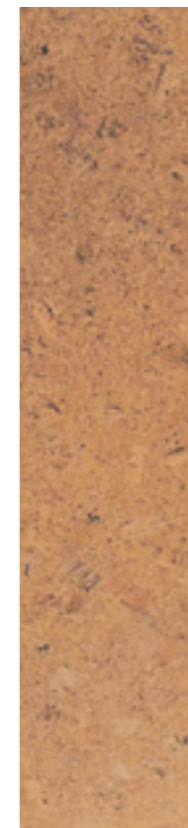
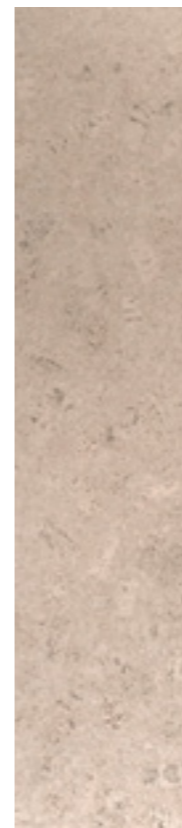
319 C



319 N



319 GV



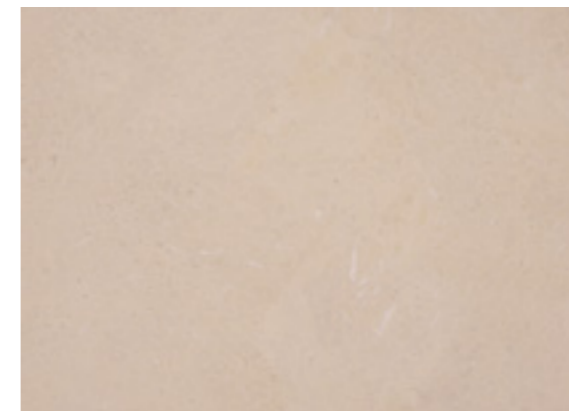
Narrow Plank *Collection*

Slate

Collection



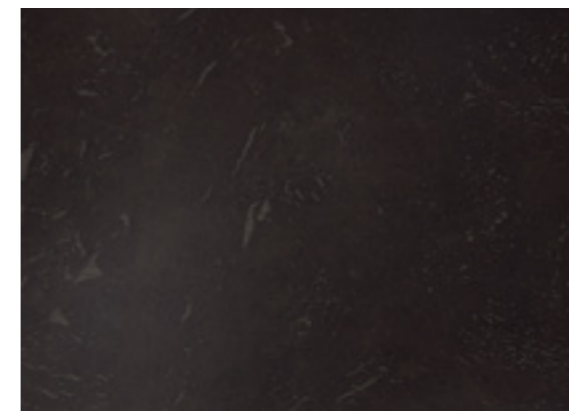
Slate Collection | 108 C x



108 C (F) (GD)



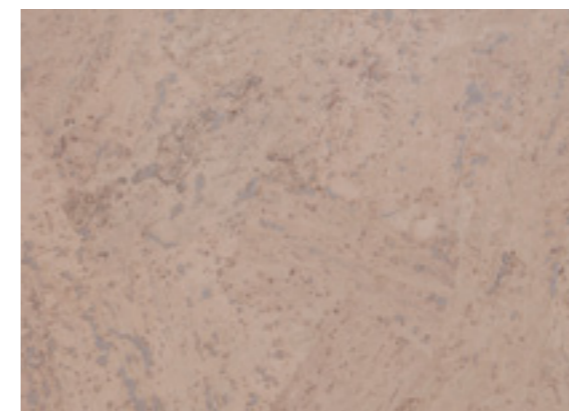
108 CZ (F) (GD)



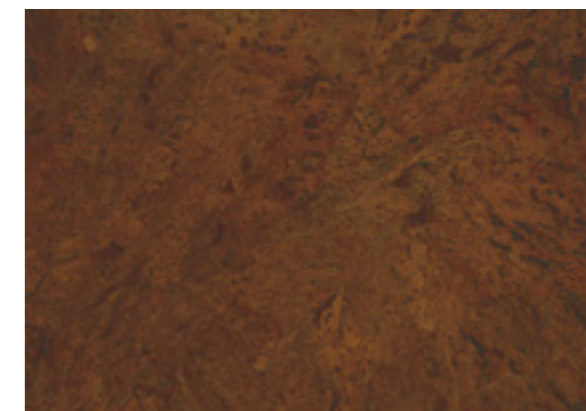
108 PTT (F) (GD)



115 AG (F) (GD)



115 C (F) (GD)



115 MT (F) (GD)



Long Plank Collection | 108 PT x2



FLOOR *COVERINGS* | Cork Concept

Long Plank

Collection

108 C



108 SLC



108 PT



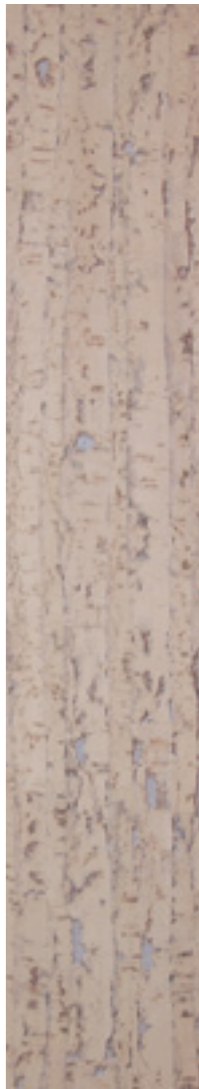
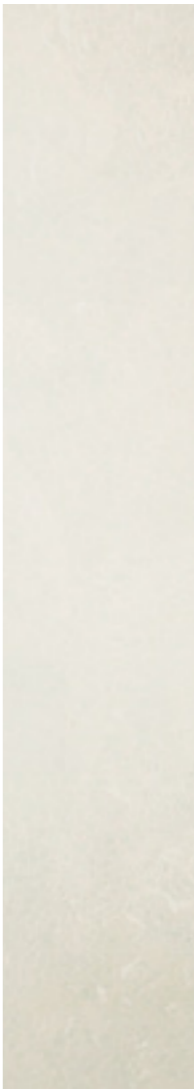
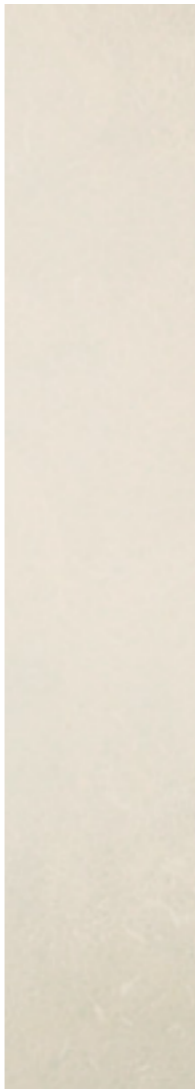
108 W



120 ML



420 C





Vinyl

Enjoy the realistic look of the decors while they add style, design, and personality to your space. If you haven't explored vinyl floors for a while you will be amazed at the new, exciting CORKART Vinyl Concept. Feel free... create the environment YOU want!

OUR EMBOSS STRUCTURES



Regular Emboss | Wood, Stone, Metallic, Cement

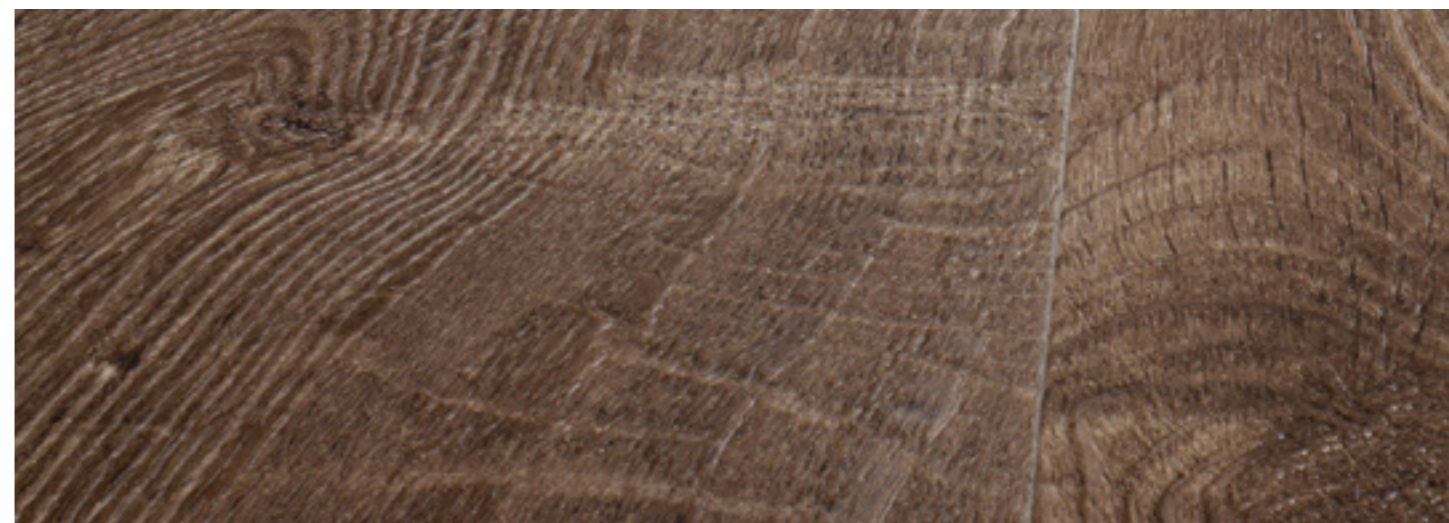


Regular Emboss | Emboss matches the wood grains

OUR BEVELS




X - 4 Sides deep bevel | **X2** - Longside deep bevel

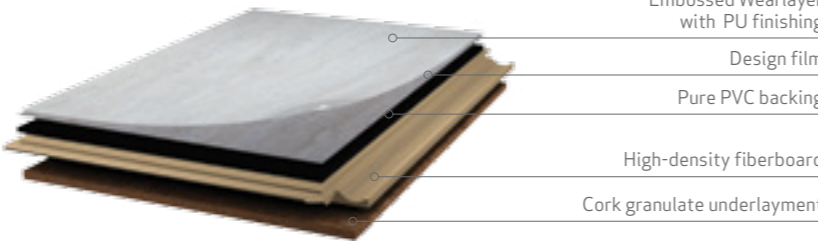


< - 4 Sides micro bevel | **<2** - Longside micro bevel

FLOATING FLOOR







COLLECTIONS	Dimensions (mm)	Bevel Available	Impact Sound Reduction	Emboss Structures	Class
HOME	900 x 300 x 9,8	No	16 dB	Regular - Wood	32
WIDE PLANK	900 x 300 x 9,8	No	16 dB	Regular - Wood	32
GRANGE	1200 x 210 x 9,5	X or X2	15 dB	Regular - Wood	32
OAK PLANK	1200 x 210 x 9,5	X or X2	15 dB	Regular - Wood	32
ORIGINALS	1200 x 210 x 10,8	X or X2	18 dB	Regular - Wood	32
METALLIC	612 x 440 x 10,8	X	18 dB	Regular - Stone	32
STONE	612 x 440 x 10,8	X	18 dB	Regular - Stone	32
XL SLATE	1200 x 440 x 10,8	X	18 dB	Regular - Cement	32
ROYAL SENSES	1200 x 210 x 10,8	< or <2	18 dB	Registered	42
RUSTIC SENSES	1200 x 210 x 10,8	< or <2	18 dB	Registered	42
LUNGO	1800 x 220 x 10,8	< or <2	18 dB	Regular - Wood	42

AQUA CLIC







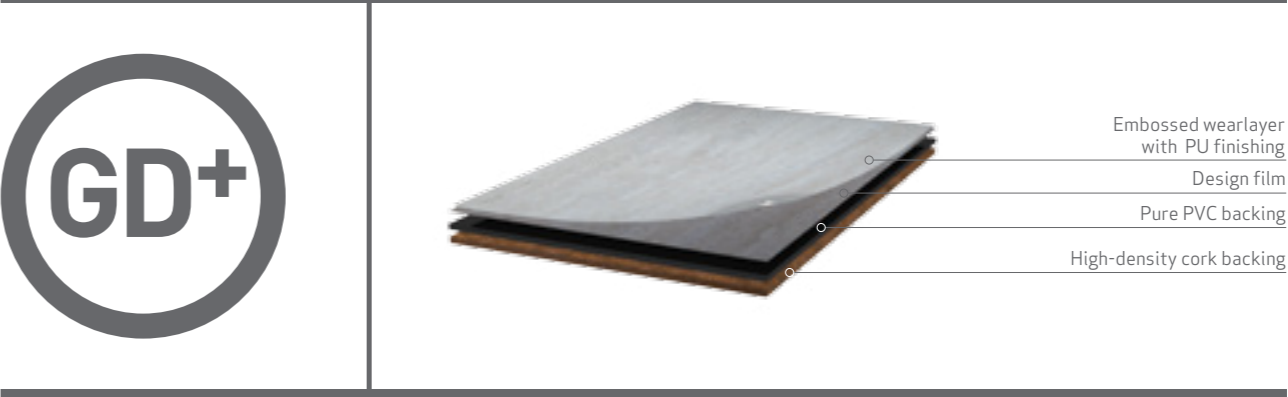
COLLECTIONS	Dimensions (mm)	Bevel Available	Impact Sound Reduction	Emboss Structures	Class
HOME	905 x 305 x 5,1	No	7 dB	Regular - Wood	32
WIDE PLANK	905 x 305 x 5,1	No	7 dB	Regular - Wood	32
GRANGE	1205 x 215 x 5,1	X or X2	7 dB	Regular - Wood	32
OAK PLANK	1205 x 215 x 5,1	X or X2	7 dB	Regular - Wood	32
ORIGINALS	1205 x 215 x 5,1	X or X2	7 dB	Regular - Wood	32
METALLIC	620 x 445 x 5,1	X	7 dB	Regular - Stone	32
STONE	620 x 445 x 5,1	X	7 dB	Regular - Stone	32
ROYAL SENSES	1205 x 215 x 5,1	< or <2	7 dB	Registered	42
RUSTIC SENSES	1205 x 215 x 5,1	< or <2	7 dB	Registered	42

GLUE DOWN



COLLECTIONS	Dimensions (mm)	Bevel Available	Impact Sound Reduction	Emboss Structures	Class
HOME	908 x 202 x 2	X or X2	5 dB	Regular - Wood	32
WIDE PLANK	908 x 202 x 2	X or X2	5 dB	Regular - Wood	32
GRANGE	1212 x 222 x 2	X or X2	5 dB	Regular - Wood	32
OAK PLANK	1212 x 222 x 2	X or X2	5 dB	Regular - Wood	32
ORIGINALS	1212 x 222 x 2	X or X2	5 dB	Regular - Wood	32
METALLIC	622 x 452 x 2	X or X2	5 dB	Regular - Stone	32
STONE	622 x 452 x 2	X or X2	5 dB	Regular - Stone	32
ROYAL SENSES	1220 x 228 x 2,5	< or <2	5 dB	Registered	42
RUSTIC SENSES	1220 x 228 x 2,5	< or <2	5 dB	Registered	42

GLUE DOWN *Plus*



COLLECTIONS	Dimensions (mm)	Bevel Available	Impact Sound Reduction	Emboss Structures	Class
HOME	908 x 202 x 4 908 x 202 x 6	X or X2	12 dB 16 dB	Regular - Wood	32
WIDE PLANK	908 x 202 x 4 908 x 202 x 6	X or X2	12 dB 16 dB	Regular - Wood	32
GRANGE	1212 x 222 x 4 1212 x 222 x 6	X or X2	12 dB 16 dB	Regular - Wood	32
OAK PLANK	1212 x 222 x 4 1212 x 222 x 6	X or X2	12 dB 16 dB	Regular - Wood	32
ORIGINALS	1212 x 222 x 4 1212 x 222 x 6	X or X2	12 dB 16 dB	Regular - Wood	32
METALLIC	622 x 452 x 4 622 x 452 x 6	X	12 dB 16 dB	Regular - Stone	32
STONE	622 x 452 x 4 622 x 452 x 6	X	12 dB 16 dB	Regular - Stone	32
ROYAL SENSES	1212 x 222 x 4 1212 x 222 x 6	< or <2	12 dB 16 dB	Registered	42
RUSTIC SENSES	1212 x 222 x 4 1212 x 222 x 6	< or <2	12 dB 16 dB	Registered	42

Home

Collection

922

F

AC

GD

GD⁺



924

F

AC

GD

GD⁺



925

F

AC

GD

GD⁺



926

F

AC

GD

GD⁺



Wide

Plank

Collection


802

F

AC

GD

GD⁺




803

F

AC

GD

GD⁺



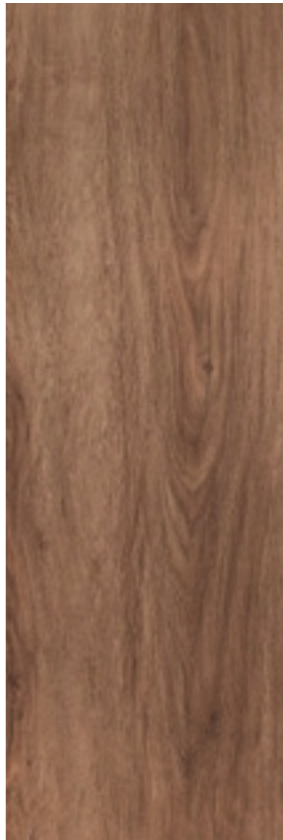
804

F

AC

GD

GD⁺



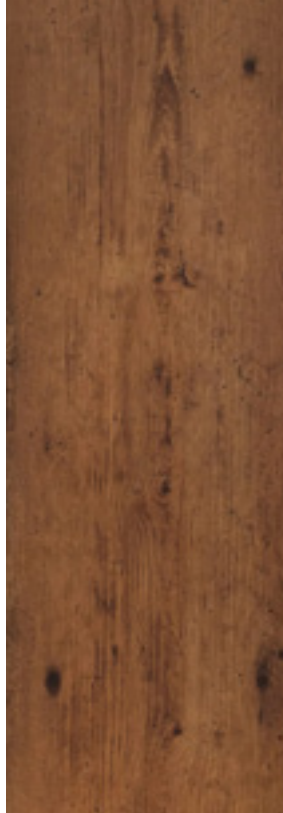
862

F

AC

GD

GD⁺



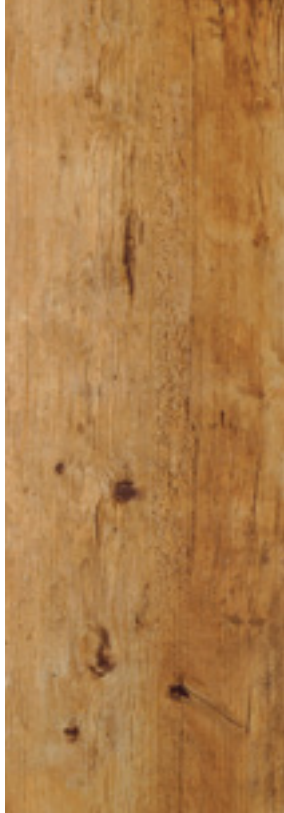
863

F

AC

GD

GD⁺





Grange

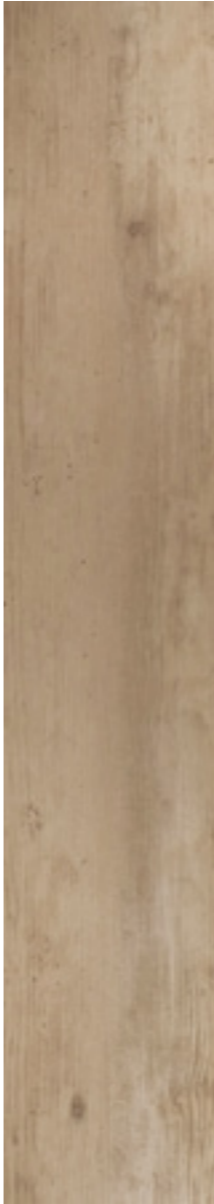
Collection



Grange Collection | 960



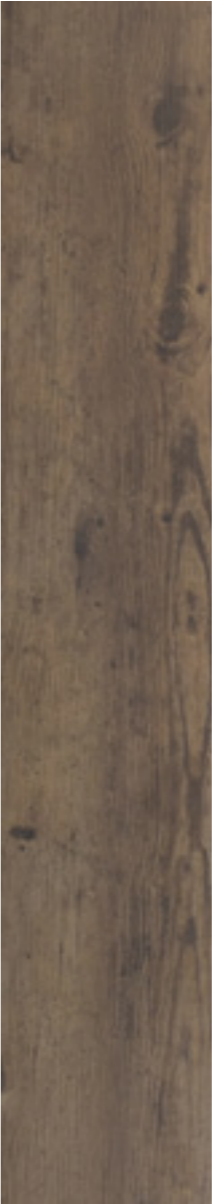
960
F AC GD GD*



961
F AC GD GD*



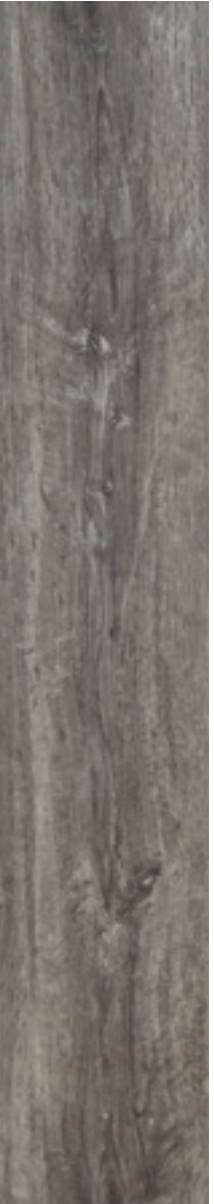
962
F AC GD GD*



520
F AC GD GD*



521
F AC GD GD*



Oak Plank

Collection

- 952

FACGDGD+
- 953

FACGDGD+
- 954

FACGDGD+
- 955

FACGDGD+
- 956

FACGDGD+
- 957

FACGDGD+
- 503

FACGDGD+
- 504

FACGDGD+







FLOOR COVERINGS | Vinyl Concept

Originals

Collection

802

F AC GD GD*



803

F AC GD GD*



804

F AC GD GD*



806

F AC GD GD*



811

F AC GD GD*



812

F AC GD GD*

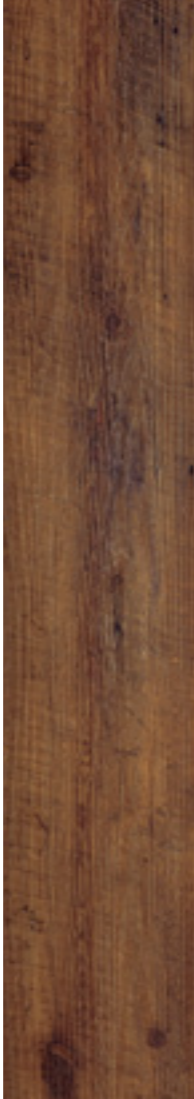




815



817



870



872



877



500



FLOOR COVERINGS | Vinyl Concept

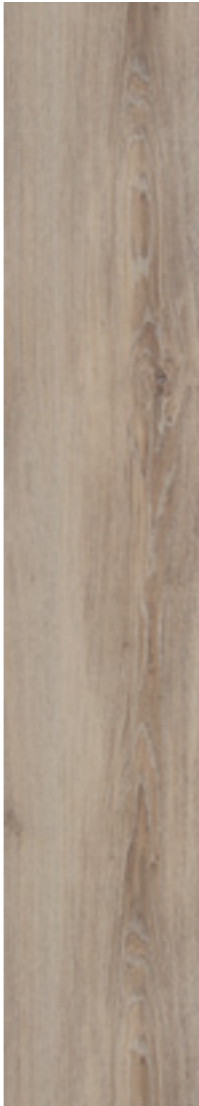


FLOOR *COVERINGS* | Vinyl Concept

502



702



703



705



714



718





Originals Collection | 811



Originals Collection | 502



FLOOR *COVERINGS* | Vinyl Concept

Metallic

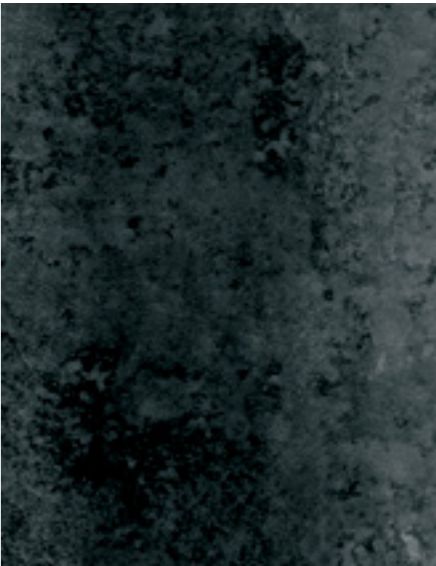
Collection



850 (F) (AC) (GD) (GD*)

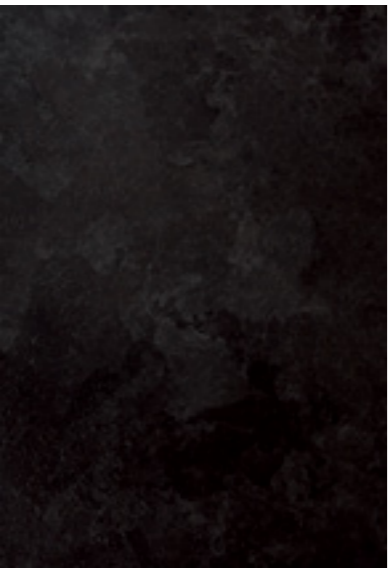


851 (F) (AC) (GD) (GD*)



852 (F) (AC) (GD) (GD*)

Stone *Collection*



(F) (AC) (GD) (GD*) 841



(F) (AC) (GD) (GD*) 842



(F) (AC) (GD) (GD*) 843



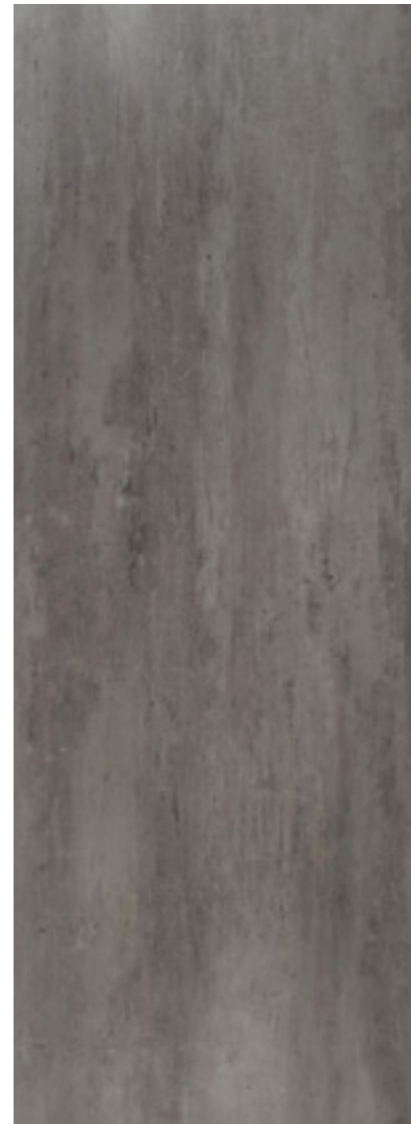
Stone Collection | 842 x



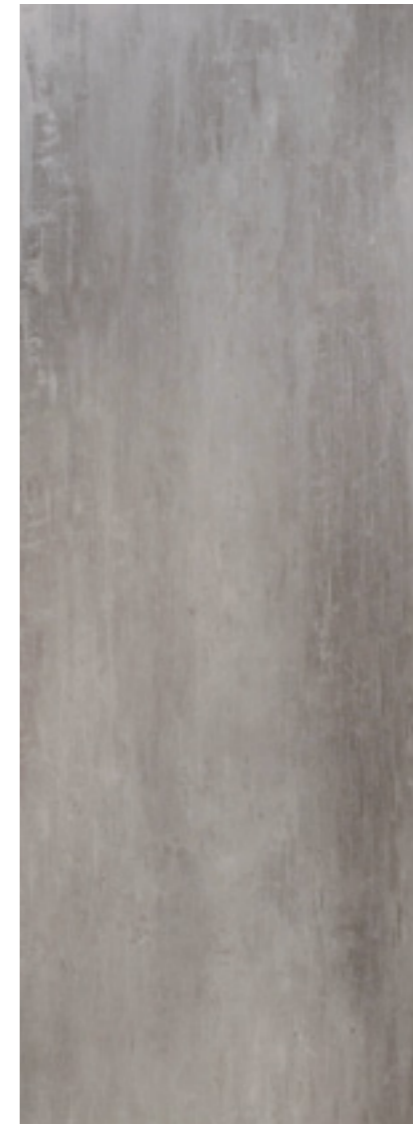
XL Slate

Collection

940 



941 



942 







890
 (F) (AC) (GD) (GD*)



891
 (F) (AC) (GD) (GD*)



892
 (F) (AC) (GD) (GD*)



893
 (F) (AC) (GD) (GD*)

Royal Senses *Collection*



Royal Senses Collection | 893 <2

Rustic Senses

Collection

980

FACGDGD*



981

FACGDGD*



982

FACGDGD*



983

FACGDGD*





Lungo

Collection



Lungo Collection | 701 <

701



704



705



712





714
ⓕ



717
ⓕ



722
ⓕ



732
ⓕ

733
ⓕ



745
ⓕ



746
ⓕ



754
ⓕ





Lungo Collection | 722 <



Grange Collection | 962



Lino

is a 100% natural product made from linseed oil, woodflour, pine rosin, jute and limestone. This durable, comfortable and stylish floor covering offers a range of colors and formats that can easily fit into most interior design schemes, from traditional to contemporary.

Murano *Collection*

FLOATING *FLOOR*



- High resistant LINO SHIELD
- Linoleum top layer
- High-density fiberboard
- Cork granulate underlayment

COLLECTIONS	Dimensions (mm)	Bevel Available	Emboss Structures	Class
MURANOS	900 x 300 x 11	No	Smooth	32
STRIPES	1200 x 210 x 11	No	Smooth	32



- 603

F
- 625

F
- 638

F
- 646

F
- 655

F
- 674

F



Stripe *Collection*



Stripe Collection | 677



wall. coverings

78

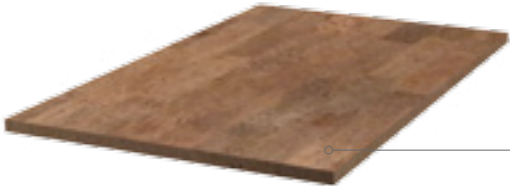


78 Wall Panels
80 Wall Tiles
84 Wall Paper



Wall Panels *Collection*

Wall Panels have excellent acoustic properties, reducing noise levels between and within rooms. Eco-friendly material, it's an excellent option instead of painting or another wall covering material. Choose a natural environment and elegant decoration.



Natural cork decor

COLLECTIONS	Dimensions (mm)	Bevel Available	Color Available	Finishing
BW 184	930 x 605 x 5	No	Natural	Raw

Wall Tiles

Collection

Wall Tiles Collection, consists in a fantastic range of colors with several different designs. With this exclusive collection we offer you confort and a warm environment with style.



Top coating

Natural cork decor

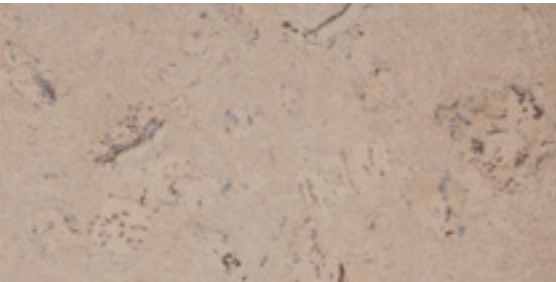
COLLECTIONS	Dimensions (mm)	Bevel Available	Finishing
PW 3 mm ALL DESIGNS	600 x 300 x 3	Yes	Sanded or coated



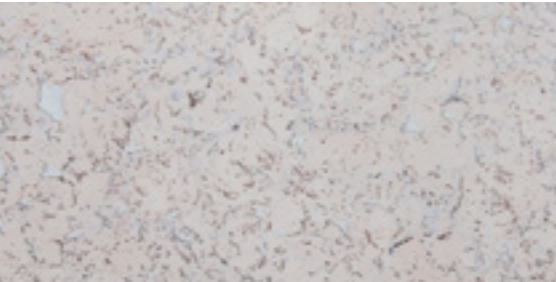
PW 101 NN



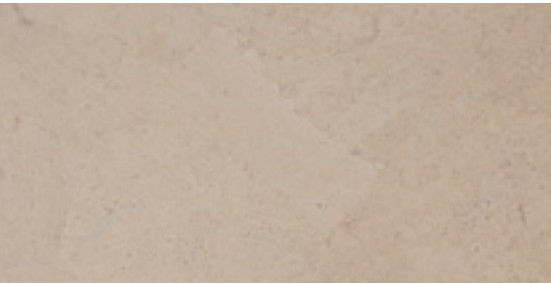
PW 107 TsN



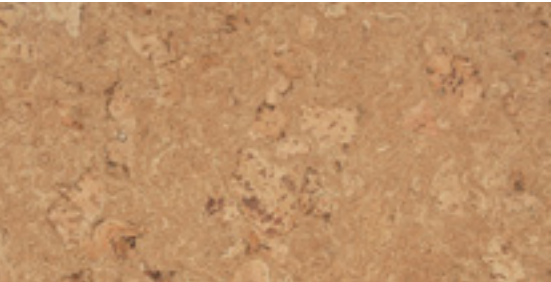
PW 323 NW



PW 324 WS



PW 103 NW



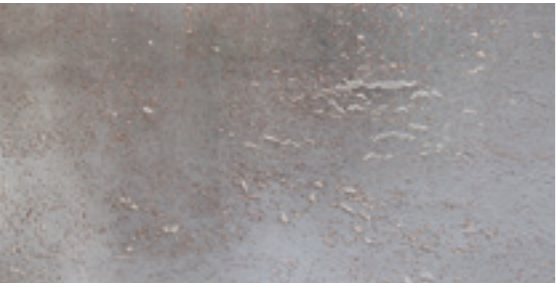
PW 323 NN



PW 324 NN



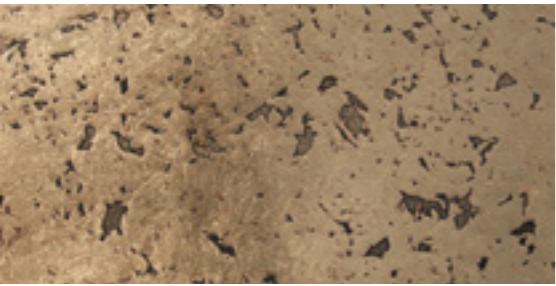
PW 324 DL



PW 386 WTs



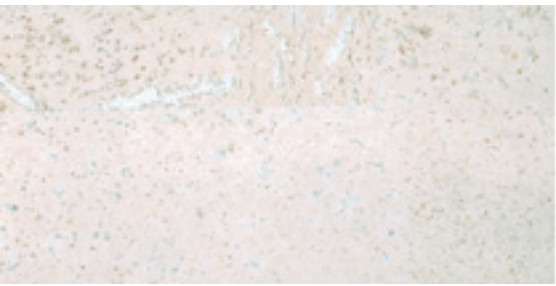
PW 386 TcP



PW 324 Ptg



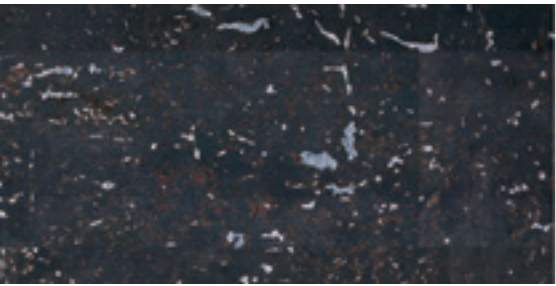
PW 378 NN



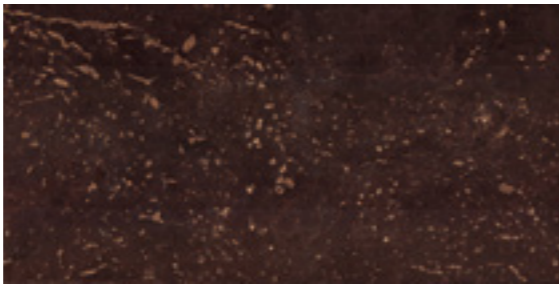
PW 386 WS



PW 386 UR



PW 386 WZ



PW 386 OT



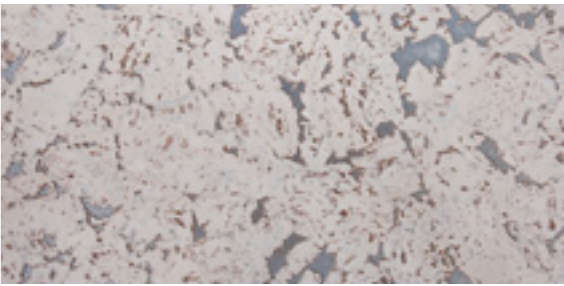
PW 386 PTs



PW 386 TgR



PW 386 PTc



PW 324 TsS

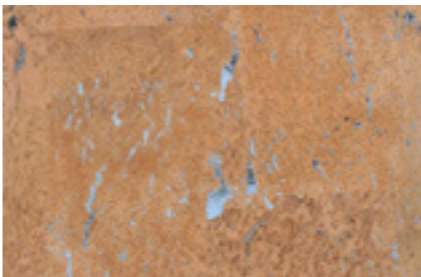
Wall Paper *Collection*



WALL *COVERINGS* | Cork Concept



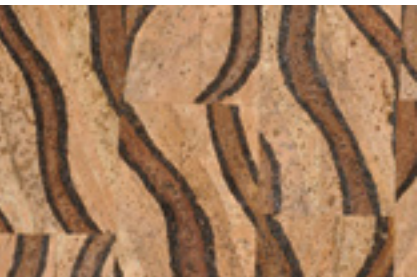
Wall Paper Collection | 156



PC7 - 107 TS



PC7 - 110 TC



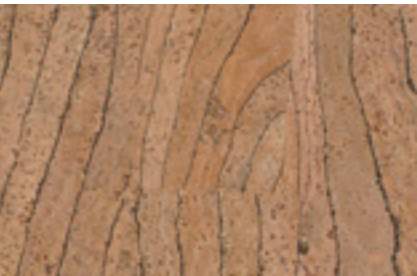
PC7 - 128



PC7 - 132



PC7 - 134



PC7 - 156



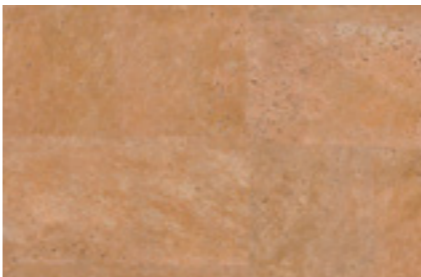
PC7 - 165



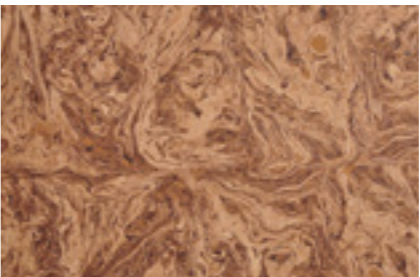
PC7 - 172



PC7 - 176



PC7 - 188



PC7 - 197



PC7 - 420 TG



Underlayment

88



88 Sheets & Rolls



Cork Underlay

CORKART Cork Underlayment is the underlayment of choice for sound control. Forever resilient unlike the majority of synthetic underlayment membranes, it can be installed under any type of floor covering. A natural product which does not rot, it reduces and absorbs the moisture which might be created by condensation, preventing degradation of the floor covering and the subfloor.

Due to the unique 40 million cells per cubic centimetre honeycomb structure of cork and the special nature of the resin binder, it performs outstandingly under laminate flooring, hardwood, linoleum, ceramic or even natural stone.

Cork underlayment can be used in commercial or domestic applications and helps significantly to the acoustic performance and comfort of floors.

 UNDERLAYMENT | Cork Concept

COMPARSION OF VARIOUS TYPES OF UNDERLAYMENT	CORKART Cork Underlayment	Poured Product	Economy Synthetic Roll/Sheet Product	Density Kg/m3
Acoustically Effective	•	•		•
Economical	•	•	•	
Quick & Easy to Install	•		•	•
Stress Crack Suppressant	•			•
Collapse & Crumble Resistant	•			•
Environmentally Friendly	•			
Fire Resistant	•	•		
Moisture Resintant	•	•	•	•
Naturally Resists Mold, Mildew & Insects	•			

CORK SHEETS	Thickness (mm)	Lenght (mm)	Widht (mm)	Density Kg/m3	Impact Sound Reduction (DIN EN ISO 140-8)	Impact Sound Reduction (DIN EN ISO 140-8)
SK00S 2.0	2	930	635	200-220	17 dB	0,044 m2K/W
SK00S 2.0	2	1245	635	200-220	17 dB	0,044 m2K/W
SK00S 4.0	4	930	635	200-220	19 dB	0,086 m2K/W
SK00S 4.0	4	1245	635	200-220	19 dB	0,086 m2K/W
SK00S 6.0	6	930	635	200-220	20 dB	0,140 m2K/W
SK00S 6.0	6	1245	635	200-220	20 dB	0,140 m2K/W
SK00S 8.0	8	930	635	200-220	21 dB	0,165 m2K/W
SK00S 8.0	8	1245	635	200-220	21 dB	0,165 m2K/W
SK00S 10.0	10	930	635	200-220	22 dB	0,172 m2K/W
SK00S 10.0	10	1245	635	200-220	22 dB	0,172 m2K/W

Besides our regular offer of Underlay Sheets can be supplied with different measures, thickness or density.

For information about Cork Roll underlayment, please contact us for further information.



Technical products

92

- 92 Floating Installation Tool
- 93 Repair kit &
Maintenance Product



TECHNICAL PRODUCTS | Cork Concept

Maintenance Product

A specially formulated biodegradable coating that helps revitalize and protect your CORKART floor against wear and moisture.

The use of DL-9667 is mandatory to maintain the wear warranty on CORKART floors. Biodegradable, contains no volatile organic compounds (VOCs).



FIT Floating Installation Tool

To avoid damage in your new floor, the appropriate way to install it is by using this tapping block. This tool was developed by CORKART so that you can use it with *Aqua Clic* and floating.



Repair Kit

Our *Repair Kit* is a usefull help when your floor gets damaged by any reason. It is very easy to apply and you can quickly save your floor from holes, scratches and other similar problems. Minutes after applying the *Repair Kit* your floor will look like new. It is recomended to apply the Maintenance Product after the *Repair Kit* application for a homogeneous gloss level.

CORKART SA

CEU

CONCEPT

Cork Concept



CHARACTERISTICS	FLOATING	
Flooring according to EN 685	23 / 31	
Weight EN 430	8 Kg/m2	
Impact Insulation Class IIC	55 dB	
Thermal Insulation value EN 12524	0,11 m2 x K/W	
Dimensional Stability EN 434	< 0,1%	
Indentation EN 433	max. 0,25mm	
Abrasion Wear (Taber using CS-17 wheels;1kg weight / each wheel)	> 12.000 revolutions	
Resistance against abrasion according EN 14354	WR0	
Determination of the formaldehyde emission EN 717-1	0,02 ppm	
Fire classification according to EN 13501-1	Cfl S1	
Determination of the Slippery Resistance EN 13893	Class D5	
Resistance against staining according EN 438	Grade 1-5	
Resistance to scratching EN 438 - 2	4 N / Grade 3	

CORKART SA

CEU

CONCEPT

Vinyl Concept



CHARACTERISTICS	FLOATING	GLUEDOWN	AQUA CLIC
Fire Resistance DIN EN 13 1501	Bfl -1	Bfl -1	Bfl -1
Flame spread DIN 4102	B1	B1	B1
Dimensional Stability EN434	Approved	Approved	Approved
Weight EN 430	10/11 Kg/m2	3,6/4,5 Kg/m2	8 Kg/m2
Chemical Resistance EN 423	Class O, good	Class O, good	Class O, good
Abrasion Wear EN 425	Pass Castor Chair	Pass Castor Chair	Pass Castor Chair
Slippery Resistance DIN 51130	R 9 (very secure)	R 9 (very secure)	R 9 (very secure)
Indentation EN433	0,03 mm	0,08 mm	0,03 mm
Anti-static Resistance EN 1815	<2kV	<2kV	<2kV
Toxicity EN 71	Non Toxic	Non Toxic	Non Toxic
Resistance to Fading ISO 105 B02	7/8 - Good	7/8 - Good	7/8 - Good

CORKART SA

CEU

CONCEPT

Lino Concept



CHARACTERISTICS	FLOATING	
Flooring according to EN 685	23 / 32	
Thickness EN 428	11 mm	
Weight EN 430	10 Kg/m2	
Static Charge EN 1815	< 2 kV	
Fire classification according to EN 13501-1	Cf1 S1	
Thermal Insulation value EN 12524	0.17 W/m-K	
Dimensional Stability EN 434	< 0,1%	
Indentation EN 433	0.07	
Determination of the Slippery Resistance EN 13893	DS: => 0.30	
HDF thickness swelling 24 hours EN 317 E1	< 8%	
Determination of the effect of a castor chair EN 425	Suitable for office chairs with castors	



Parque Industrial Vendas Novas, Lote 20
7080-341 Vendas Novas - Portugal
Tel.: +351 265 809 215/16
Fax: +351 265 809 217
geral@corkart.pt
www.corkart.pt



UNIÃO EUROPEIA

Fundo Europeu de
Desenvolvimento Regional